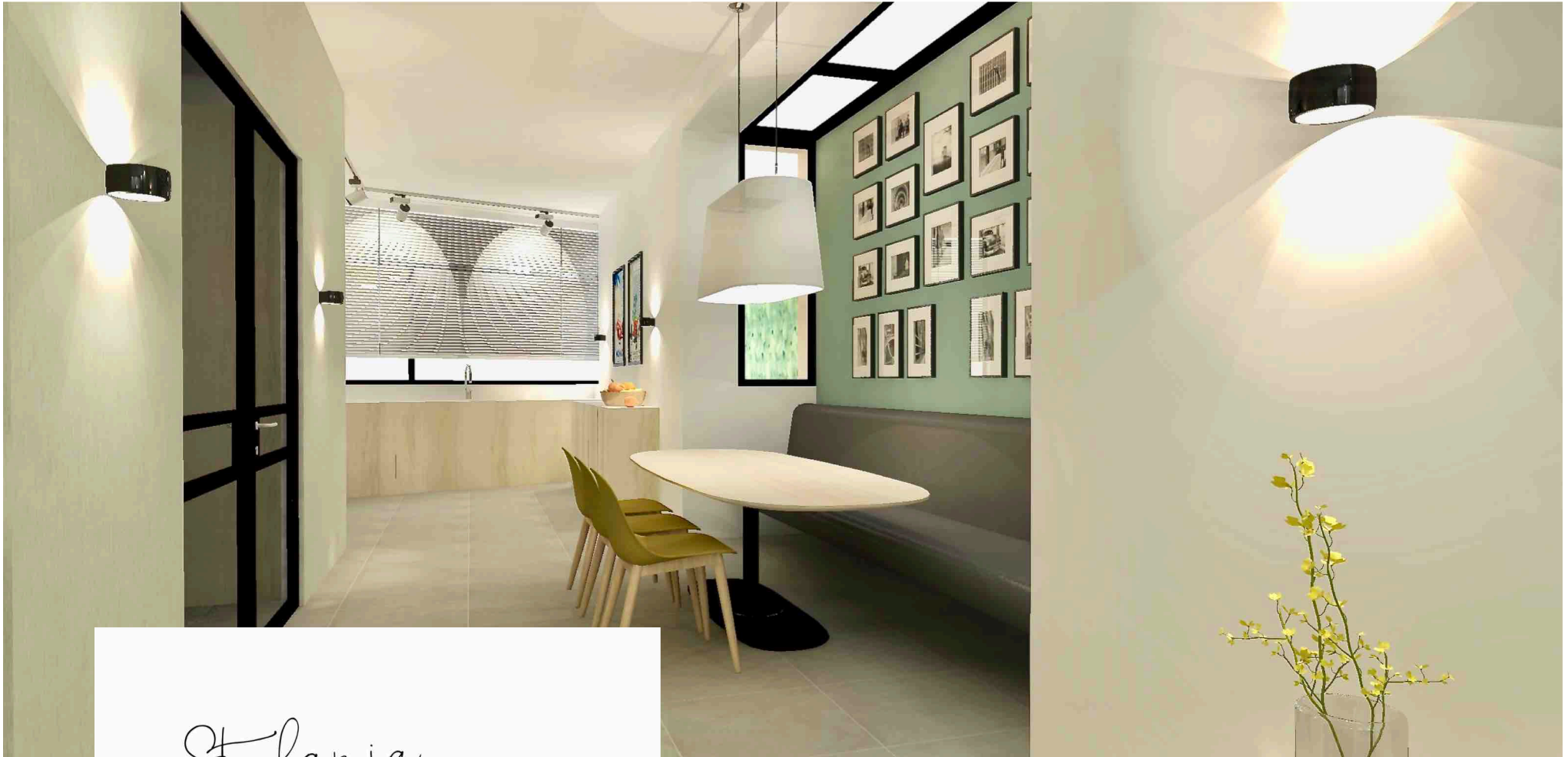


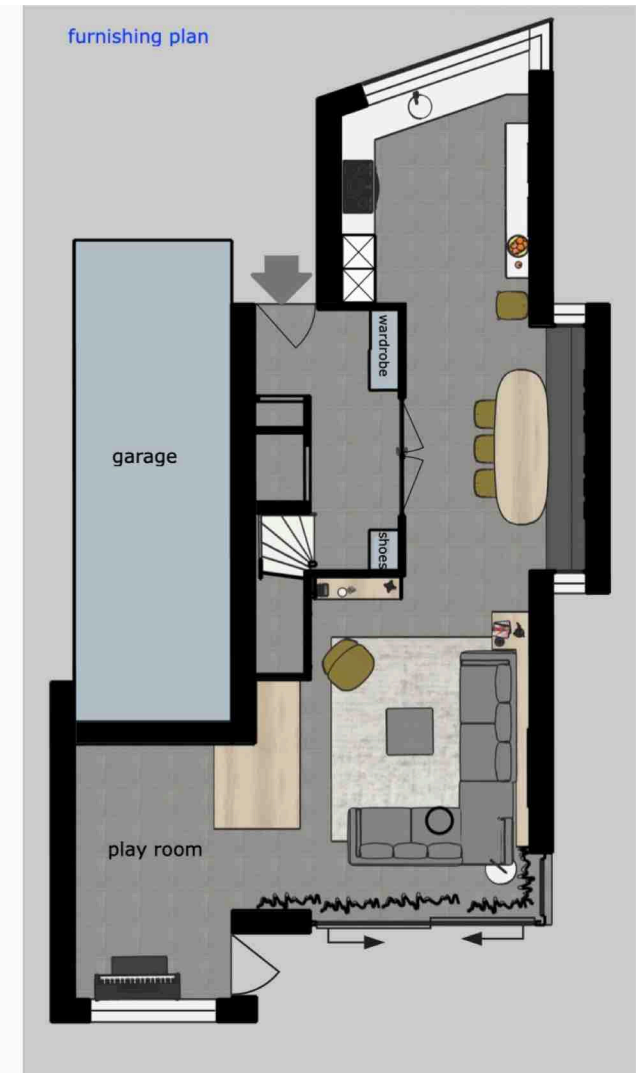
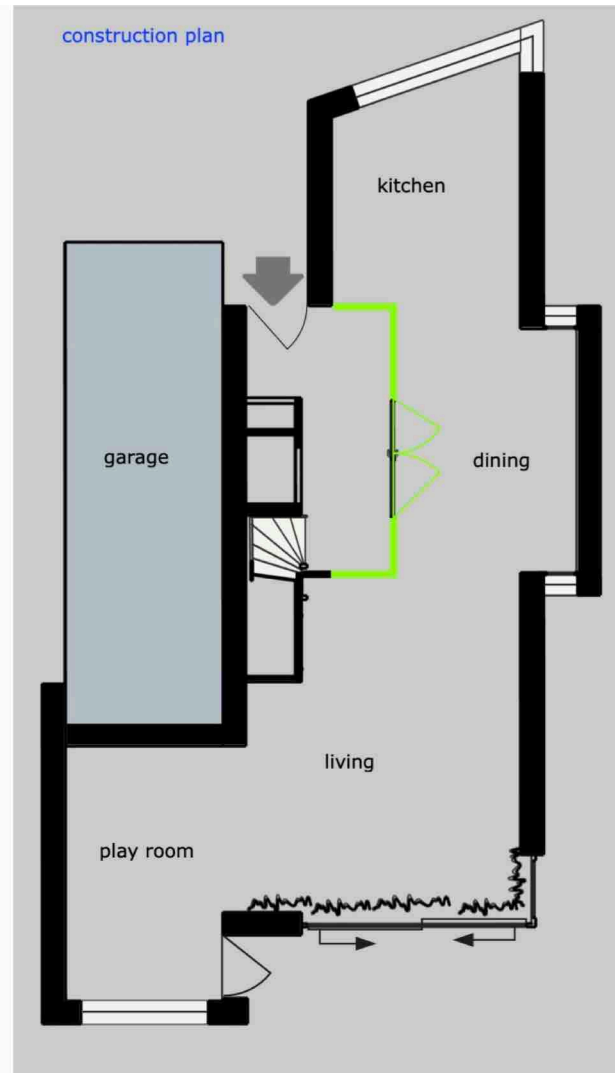
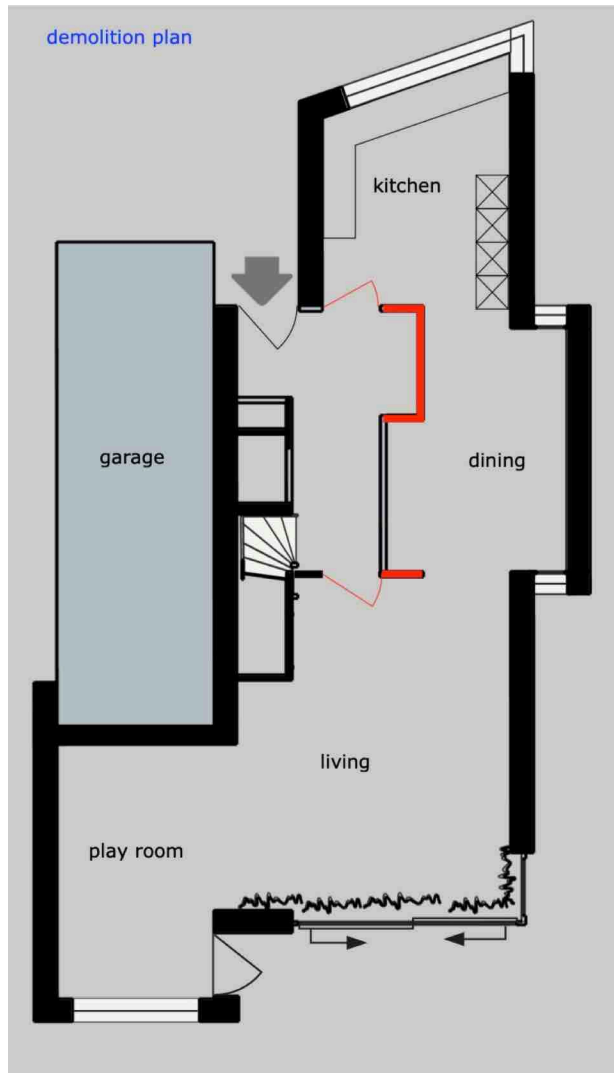
## Ground floor interior design



Stefania  
**RASTELLINO**  
interior design

sketch interior design  
Tedingeroord, Den Haag

## structural changes



The design aims to enlarge the dining area and to make the transition to the kitchen and the living room smoother.

Stefania

furnishing plan

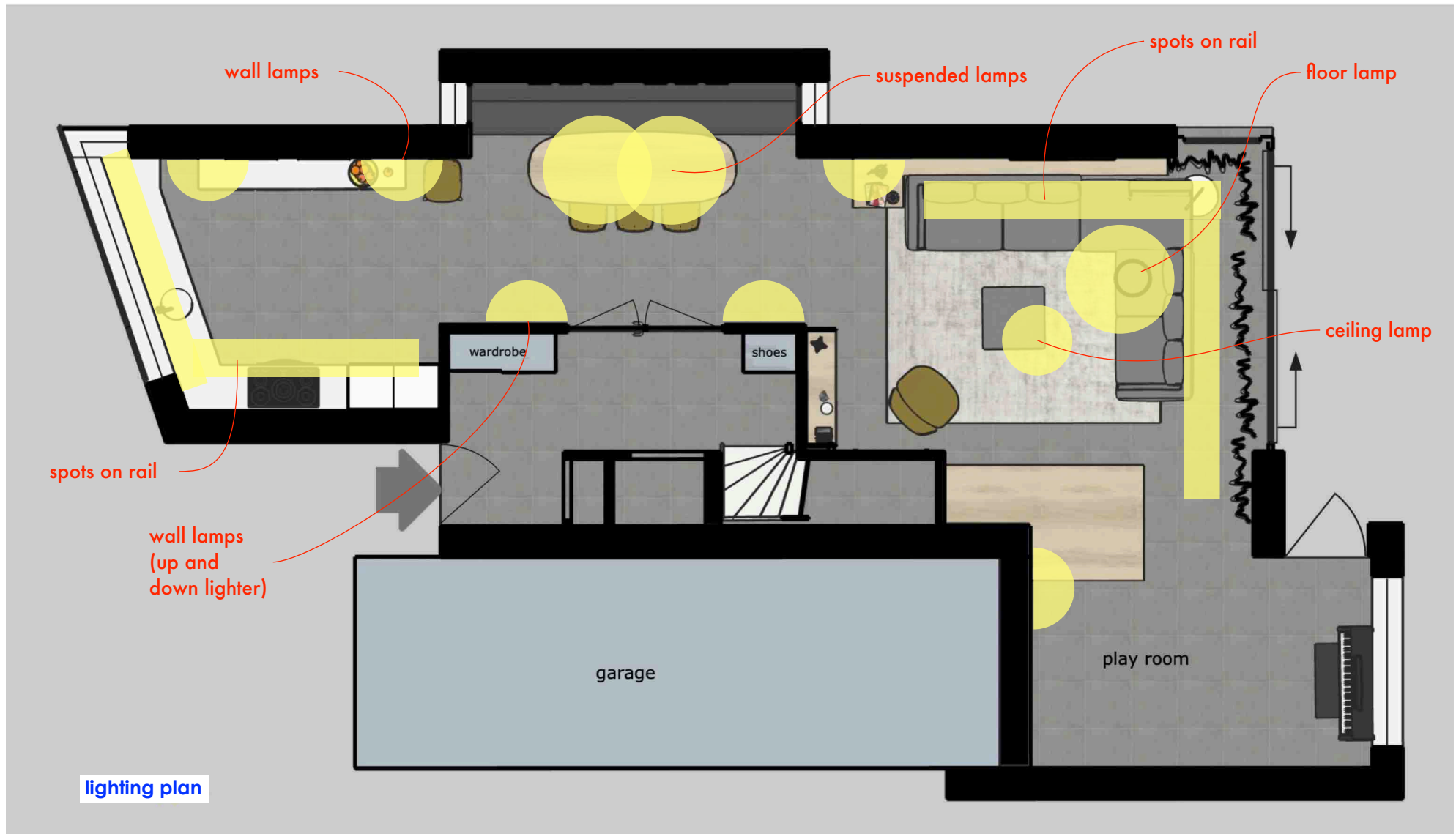


furnishing plan

Stefania

sketch interior design

# lighting plan



lighting plan

Stefania

sketch interior design

## dining area



Stefania

sketch interior design

The dining area is the heart of this home: it has a central position in the floor plan and it's where the family moments happen. This place is gifted with lots of natural light and should be valued through colour, material and decoration. The structural changes aim to give this space more air and fluidity. Also, from here you can see the corner windows on both sides, which are a great feature in the architecture of the house and should be left visible as much as possible.

double doors leading from entrance hall to dining room



The niche in the extension hosts a floating bench and the big dining table. The wall behind the bench is decorated with a powerful yet harmonious colour and family pictures, which -together with the natural light from the skylights on the sides and above the niche- will be the first thing one sees from the entrance hall and through the double doors.

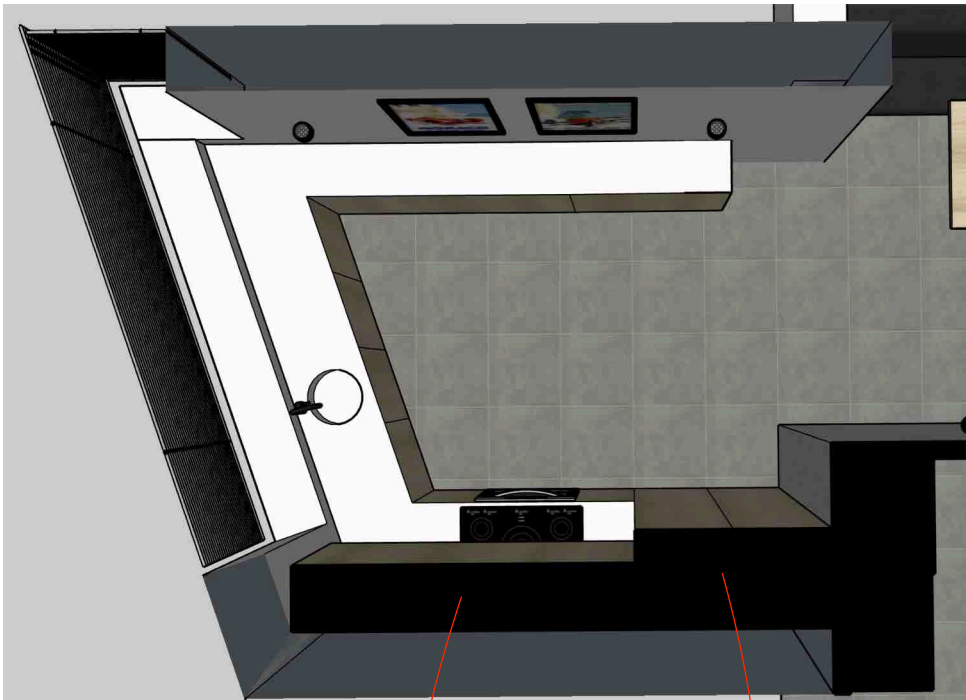
Stefania

sketch interior design



kitchen

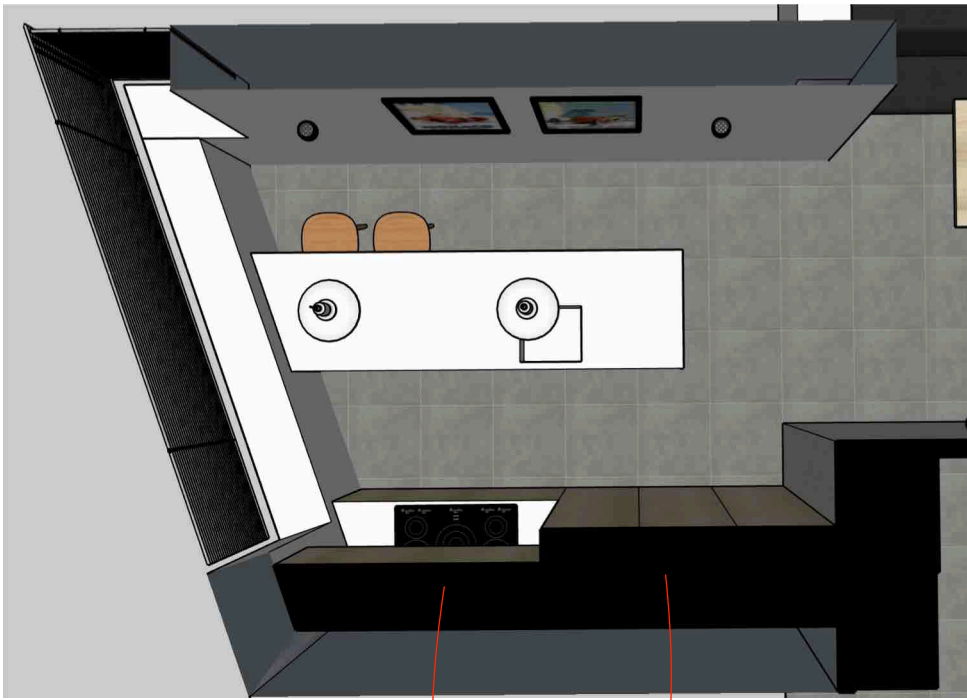
Stefania



option 1: U shape

hanging cabinets  
with integrated led strip

double fridge  
(2 columns of 60 cm)



option 2: island and stools

hanging cabinets  
with integrated led strip

double fridge + 1  
(3 columns of 60 cm)

living room



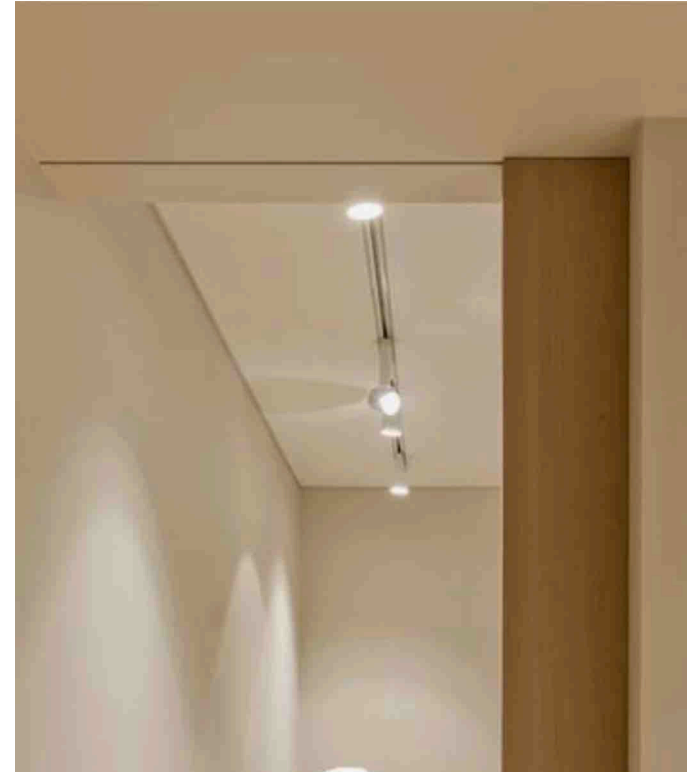
custom made high cabinet for extra storage



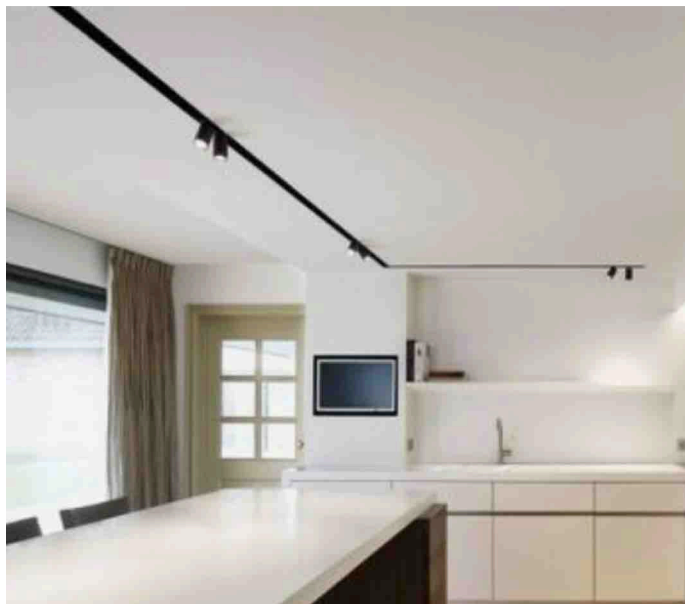
lighting plan - spots on rail system examples (source: Pinterest)



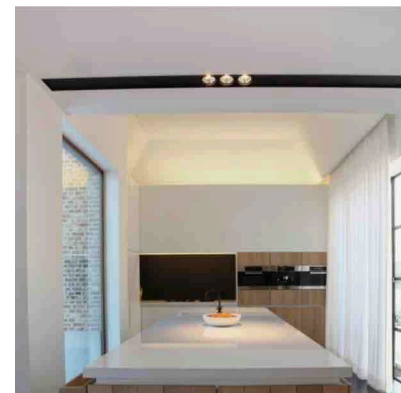
rails and spots are attached to the ceiling



rails are recessed in the ceiling



rails are recessed in the ceiling



rails AND spots are recessed in the ceiling

colours and materials (source: Pinterest)



visualisation with lights on



Stefania

visualisation with lights on



Stefania

visualisation with lights on



Stefania



visualisation with lights on



Stefania



sketch design for the extra cabinet in the living room



Stefania

## visualisation Before and After



before



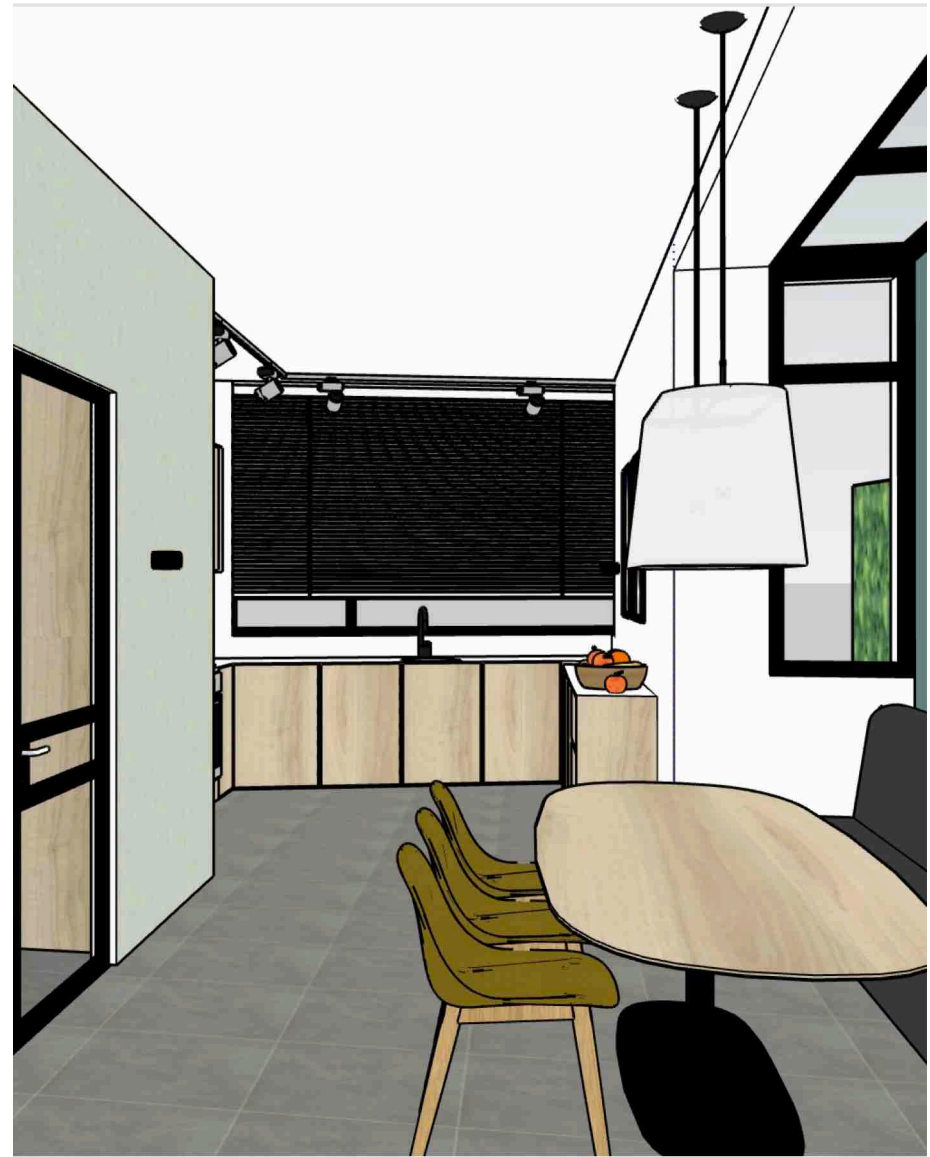
after

Stefania

visualisation Before and After



before



after

Stefania

## visualisation Before and After



before



after

Stefania

Copyright:

© 2018 Stefania Rastellino interior design. All Rights Reserved.

Contact me:

[www.stefaniarastellino.com](http://www.stefaniarastellino.com) - [info@stefaniarastellino.com](mailto:info@stefaniarastellino.com)

Disclaimer:

The author has made every effort to ensure that the information contained in this book is correct and current at the time of publication but takes no responsibility for any error, omission or defect.